



Bedford, New Hampshire

2010 Master Plan

TRANSPORTATION

Thursday, September 3, 2009

INTRODUCTIONS

- **VHB, Inc.**
 - Ralph Willmer, Project Manager
 - Robin Bousa, Director of Transportation Systems

AGENDA

- 1. Approval of July 16, 2009 meeting minutes**
- 2. Meeting with the Bedford Economic Development Commission**
- 3. Update from Michael Izbicki, Interim Director of the NH Rail Transit Authority**
- 4. Robin Bousa, VHB – presentation of the draft Transportation element of the plan**

GOALS OF TRANSPORTATION PLAN

- **General objective is to plan and promote the development and maintenance of a comprehensive transportation system servicing the community.**
- **The system should be inclusive of highways, sidewalk and pedestrian ways, bikeways, and transit.**
- **List of 10 goals for consideration in draft.**

PAST

- **Route 101 Corridor Study**
- **US 3 Corridor Access Management Plan & Off-Site Exaction Procedure**
- **State's Ten Year Improvement Plan 2009-2018**
 - **MAAR**
 - **US Route 3 bridge over FEET**

PRESENT FUNCTIONAL CLASS & JURISDICTION

| <u>Roadway</u> | <u>Functional Classification</u> | <u>Jurisdiction</u> |
|--|----------------------------------|---------------------|
| Interstate 293 | Interstate Highway | NHDOT |
| F. E. Everett Turnpike | Freeway/Expressway | NHDOT |
| NH Route 101 | Principal Arterial | NHDOT |
| NH Route 114 | Principal Arterial | NHDOT |
| US 3, Meetinghouse Rd to Manchester City Line | Principal Arterial | Town |
| US 3, Meetinghouse Rd To Merrimack Town Line | Minor Arterial | NHDOT/Town* |
| Wallace Road | Collector | Town |
| New Boston Road | Collector | Town |

2000 JOURNEY-TO-WORK DATA

Bedford Residents

Location of Employment

| | |
|-------------|-----|
| Manchester | 29% |
| Bedford | 26% |
| Nashua | 9% |
| Merrimack | 4% |
| Londonderry | 3% |
| Concord | 2% |
| Hooksett | 2% |
| Goffstown | 2% |
| Amherst | 1% |
| Hudson | 1% |
| Salem | 1% |
| Boston, MA | 1% |
| Other | 19% |

Bedford Employees

Location of Residence

| | |
|-------------|-----|
| Manchester | 26% |
| Bedford | 18% |
| Nashua | 6% |
| Merrimack | 6% |
| Goffstown | 5% |
| Derry | 3% |
| Hooksett | 3% |
| Londonderry | 2% |
| Amherst | 2% |
| Hudson | 2% |
| Concord | 2% |
| 7 Towns at | 1% |
| Other | 18% |

Source: US Census 2000

MODE SHARE

Resident Mode Split

Percent

| | |
|-------------------------|-----|
| Single Occupant Autos | 86% |
| Multiple Occupant Autos | 5% |
| Public Transportation | <1% |
| Walk/Bike | <1% |
| Work at Home | 6% |
| Other | 2% |

Source: US Census 2000

TRAFFIC VOLUMES

| <u>Roadway</u> | <u>First Year</u> | <u>Last Year</u> | <u>First Year</u> | <u>Last Year</u> | <u>Growth</u> |
|---|-------------------|------------------|-------------------|------------------|---------------|
| NH Route 101, at Amherst Town Line | 1998 | 2008 | 15,000 | 13,000 | -1.4% |
| NH Route 101, east of NH Route 114 | 1999 | 2007 | 38,000 | 32,700 | -1.9% |
| US Route 3, under NH Route 101 | 1998 | 2008 | 26,000 | 27,000 | +0.4% |
| Boynton St, east of NH Route 101/114 | 1998 | 2008 | 8,100 | 8,800 | +0.8% |
| New Boston Rd, west of Tirrell Hill Rd | 1999 | 2008 | 7,600 | 8,400 | +1.1% |
| North Amherst Road, at Riddle Brook | 1999 | 2008 | 4,300 | 5,000 | +1.7% |
| Bedford Center Rd, east of Ministerial Rd | 1999 | 2007 | 5,400 | 4,700 | -1.7% |

Sources: NHDOT and SNHPC websites.

PUBLIC TRANSPORTATION

Step Saver Program-

Individuals who are prevented from using fixed route; by reservation

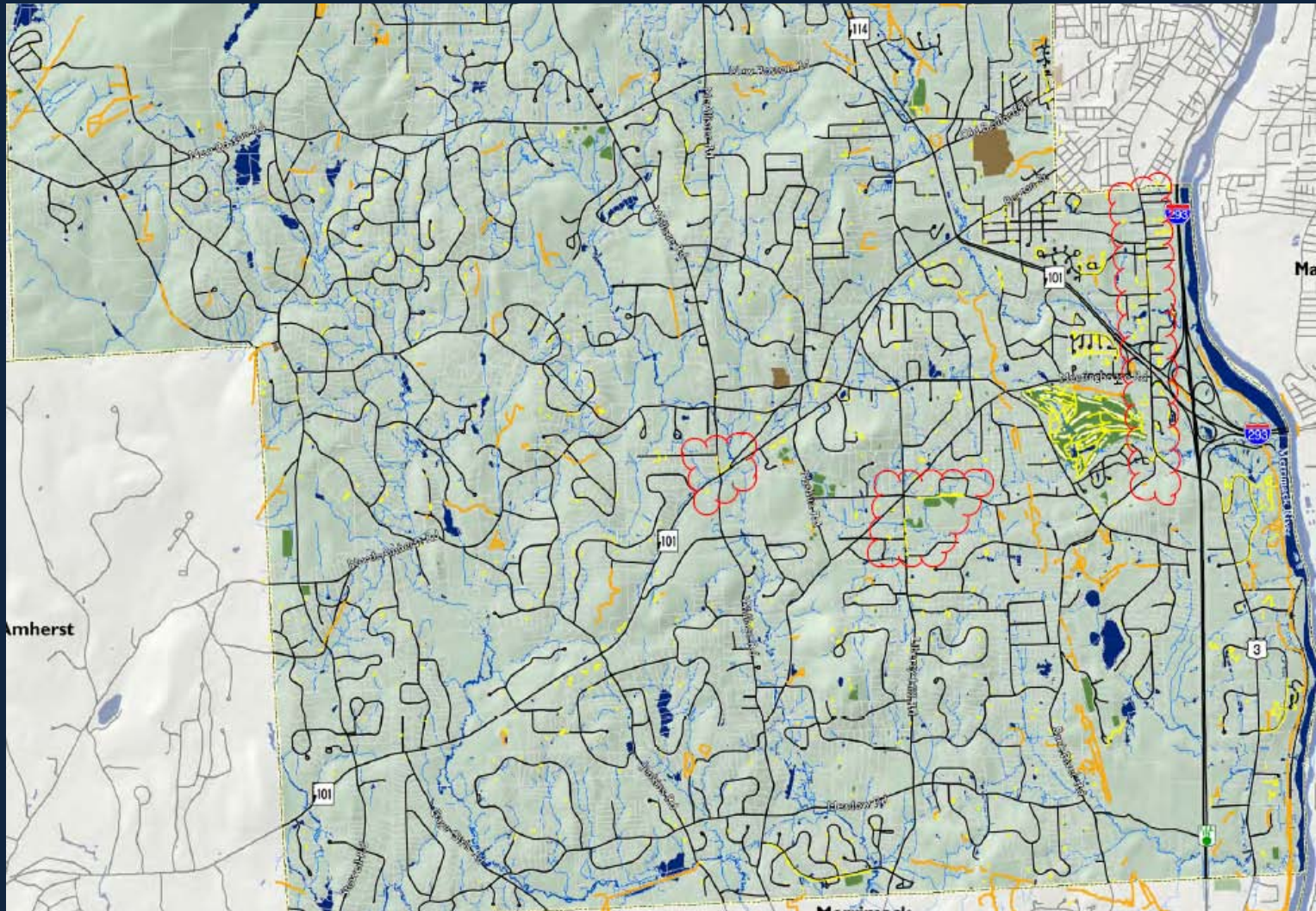
MTA Route 13 -

US 3 from Manchester to TARGET/Lowe's

Runs weekdays 6:45 AM to 6:55 PM and Saturday 8:45 AM to 5:55 PM



PEDESTRIAN & BICYCLE FACILITIES



CONGESTED FACILITIES

- **NH Route 101**

- **Long delays and queues during commuter peak hour conditions**
- **Resulted in cut-through traffic in Town Center via Wallace and Meeting house Roads**
- **Junction with NH Route 114**
- **Average of 164 crashes per year (2005 – 2007)**

- **US Route 3**

- **Long delays and queues during commuter peak hour conditions**
- **Average of 124 crashes per year (2005 -2007)**

FUTURE

- **Planned Developments**
 - **Macy's Redevelopment (US Route 3)**
 - **Bedford Mall Redevelopment (US Route 3)**
 - **Lexus Car Dealership (Kilton Road)**
 - **Mixed Use Development (NH 101 and NH 114)**
- **Other Potential Development**
 - **MAAR Vicinity (US Route 3) – revisit this section**

RECOMMENDATIONS

Goal #1

Continue to Support the Roads Program

- ✓ **Effective means of transitioning the Town's road from rehabilitation to maintenance**
- ✓ **Lower maintenance costs in the future**
- ✓ **Requires periodic software upgrades**

RECOMMENDATIONS

Goal #2

Actively Promote the US 3 Improvement Plan & Exaction Procedure

- ✓ Work through the Bedford Economic Development Commission to promote development opportunities
- ✓ Balance Town's fiscal obligations and creating incentives for responsible growth
- ✓ Integrate transportation & land use
(UPDATE THIS GOAL)

RECOMMENDATIONS

Goal #3

Integrate Plans for the Southern Performance Zone with Planned Transportation Improvements

- ✓ **Proposed commuter rail & MAAR provide opportunities to increase tax base development, multi-modal transportation facilities, and Transit Oriented Development**
- ✓ **Pursue completion of local roadway paralleling US 3 (connectivity to MAAR & local businesses)**
- ✓ **Independent of the rail funding, consider pursuing development of a multi-modal facility proving linkage to the airport and other economic development opportunities**

RECOMMENDATIONS

Goal #4

Revisit the NH Route 101 Corridor Plan and Continue to Seek State Support

- ✓ **Assess changes associated with the new signal at Nashua Road**
 - **Connector Road?**
 - **Pedestrian Bridge?**
- ✓ **Get the project back on the Ten Year Plan**
 - **Potential to reduce overall cost?**

RECOMMENDATIONS

Goal #5

Develop a Town-wide Pedestrian and Bicycle Plan

- ✓ **Bedford HS and Middle School heightens importance of pedestrian/bike connectivity for community**
- ✓ **Aid in reduction of vehicle dependency for trips internal to Town**
- ✓ **Having a plan in place acts as a reminder when opportunities arise**
 - **Private development projects**
 - **Public Works projects**
 - **State improvements**

RECOMMENDATIONS

Goal #6

Support the NH Rail Transit Authority

Goal #7

Continue to Require Formal Traffic Impact Assessments for Development Projects

Goal #8

Continue to Implement Access Management Strategies

TRANSPORTATION POLICIES

- **Transportation Planning**
- **Fiscal Capacity to Support Infrastructure**
- **Connectivity, Traffic Calming, and Access Management**
- **Pedestrian and Bicycle Mobility**
- **Aesthetics of Transportation Infrastructure**

ADDITIONAL DISCUSSION

Thank you!